

# PART SOLUTIONS

## Wieland



**US** Content of the CAD catalogue in PARTsolutions.  
For more catalogues visit [www.cadenas.de](http://www.cadenas.de)

**D** Inhalt des CAD-Kataloges in PARTsolutions.  
Weitere Kataloge auf [www.cadenas.de](http://www.cadenas.de)

**F** Contenu du catalogue CAO dans PARTsolutions.  
Pour d'autres catalogues visitez [www.cadenas.de](http://www.cadenas.de)

**I** Contenuto del catalogo nel PARTsolutions  
altri cataloghi visitate [www.cadenas.de](http://www.cadenas.de)

**E** Contenido del catálogo de CAD en PARTsolutions.  
Para mas catálogos visite [www.cadenas.de](http://www.cadenas.de)

# INFORMATION

With PARTsolutions you are able to access a large range of standard and supplier parts as CAD system independent 2D and 3D geometry. Independent means the models are converted natively in practically every CAD system. When using CATIA for example, a real CATIA model will be generated from our model and can of course be edited and manipulated for downstream applications. Interfaces are available for all common CAD systems (see list below).



Integrations also exist to the most notable ERP/PDM systems (see list below).

Mit PARTsolutions steht Ihnen eine grosse Anzahl Normteile und Zukaufteile als CAD unabhängige 3D und 2D Geometrie zur Verfügung. Unabhängig heisst, sie können in jedes CAD System nativ übertragen werden. Der User von PARTsolutions erhält so in Verbindung mit z.B. CATIA ein echtes CATIA-Modell, das in seiner Konstruktion dann selbstverständlich weitermodelliert werden kann. Schnittstellen für jedes gängige CAD System sind verfügbar (siehe Liste unten).



In weiteren Ausbaustufen sind auch Anbindungen an ERP/PDM Systeme möglich (siehe Liste unten).

Avec PARTsolutions vous avez à votre disposition un grand nombre de composants normalisés et de pièces d'achat comme géométrie CAO indépendante du 2D et 3D. Indépendant veut dire qu'ils peuvent être transmis nativement dans presque tous les systèmes CAO. Ainsi l'utilisateur de PARTsolutions obtient une liaison avec un vrai modèle CATIA, en prenant CATIA comme exemple, qui peut être naturellement continuellement modélisé dans sa construction. Des interfaces pour tous les systèmes CAO courants sont disponibles (voir la liste ci-dessous).



Dans d'autres degrés d'extension, des liaisons avec des systèmes ERP/PDM sont aussi possibles (voir la liste ci-dessous).

Con PARTsolutions è possibile accedere a una grande quantità di parti standard e commerciali sotto forma di geometria 2D e 3D indipendente dal sistema CAD. Ciò significa che i modelli vengono convertiti nel formato nativo di praticamente tutti i sistemi CAD in commercio. Usando per esempio CATIA, viene generato un vero modello CATIA che può essere modificato e manipolato per successivi utilizzi. Le interfacce CAD disponibili sono elencate qui sotto.



Esistono anche integrazioni coi principali sistemi ERP/PDM (vedere la lista qui sotto).

Con PARTsolutions tiene a su disposición un gran número de estándares y normas de la industria como un sistema CAD de geometría independiente 2D y 3D. Independiente significa que se pueden transmitir de forma nativa a prácticamente entodos los sistemas CAD. El usuario de PARTsolutions posee de este modo en el usopor ejemplo de CATIA un modelo original de CATIA, en el cual por supuesto se puede seguir modelando. Interfaces para cada sistema CAD disponible son disponibles (ver lista abajo).



También son posibles integraciones para sistemas ERP/PDM (ver lista abajo)

PARTsolutions «Éξλά'©'όΆζ'Π'ΘΆμ'ΑCAD'Π'Π'ί'É'γ'ί'ί'Ό'Ά'¼'p'¼'x'Ό'Ά'¼'μ'Α'É'γ'¼'Υ'Ό'Ό'©'ζ'ί'»\$É'Ό'Ά'ζ'É'Ό'Ά'Π'Θ'Ά'μ'Α'Ό'ά'É'¼'É'Ç'£'~'Ό'ά'Đ'©'É'γ'¼'Υ'ζ'É'Ό'Ό'Ό'¼'¼'°'ó'É'ú'Ό'Đ'²'»'ί'~'CAD'ί'μ'¼'É'ϊ'Ό'±'½'Ό'É'Ό'Ά'ζ'£'PARTsolutions'μ'Ά'Ό'Ά'»\$±'É'É'Ç'É'μ'Ά'Ό'»,'ó'Ό'ε'CATIA'ί'á'θ'μ'Α'CATIA'Ά'£'Đ'ί'£'~'Ά'Ά'£'Đ'ί'ζ'É'Ό'Ό'Ό'¼'¼'°'ú'¼'Υ'²'»'ί'~'¼'Β'ί'á'Đ'è'ò'±'»'¼'ì'Đ'ø'Đ'p'¼'Ά'ζ'£'²'ç'Ç'Ò'¼'¼'°'ζ'Ú'Π'Ό'Ά'ζ'ε'CAD'ί'μ'¼'É'Ç'ζ'É'Ό'Ά'μ'Α' (¼'Β'ί'á'Ç'è'²'ζ'¼'¼'í'Ά'Ά'æ'μ'±'í'ñ)ζ'£'Á'í'á'Ό'ε'ERP/PDM'ί'μ'¼'É'ζ'Ú'Ό'Ό'Đ'Á'μ'Α'°'æ'±'¼'Ό'Đ'É'Ç'í'è'É'«'Ό'Đ'ζ'É'Á'Ü'É'μ'ί'Ό'μ'Α' (¼'Β'ί'á'Ç'è'²'ζ'¼'¼'í'Ά'Ά'æ'μ'±'í'ñ)ζ'£'



## Native CAD formats:

ADEM, AllPlan, AutoCad, Bihler CAT, Cadceus, Caddy, CADISON, Cadkey, Cadra, Catia, CCD/ProfCADAM, Cimatron, Fides, Helix, HiCAD, Ideas, Inventor, Logocad Triga, Mastercam, Materialise, Mechanical Desktop, Medusa, MegaCAD, Microstation, One Space Designer, Parasolid, ProE, SolidDesigner, SolidEdge, SolidWorks, Swiss Precision, Thinkdesign, TopSolid, Unigraphics, Varimetrix, Visi Series.

## Neutral CAD formats:

SAT, STEP, IGES, DXF.

## ERP/PDM Systeme:

SAP, Teamcenter, smarteam, Windchill, Insight, Compass, Gain, ProCad, Eigner. Weitere Schnittstellen auf Anfrage.

# PARTsolutions

1



US Lager-HTD-PowerGrip-GT2-Zahnscheiben-Zahnprofil-14-M

1.1



US Riemenbreite-115mm

1.2



US Riemenbreite-40mm

1.3



US Riemenbreite-55mm

1.4



US Riemenbreite-85mm

2



US Lager-HTD-PowerGrip-GT2-Zahnscheiben-Zahnprofil-8-M

2.1



US Riemenbreite-20mm

# PARTsolutions

2.2



US Riemenbreite-30mm

2.3



US Riemenbreite-50mm

2.4



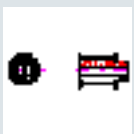
US Riemenbreite-85mm

3



US Lager-HTD-Zahnscheiben-Zahnprofil-3M

3.1



US Riemenbreite-15mm

3.2



US Riemenbreite-9mm

4



US Lager-HTD-Zahnscheiben-Zahnprofil-5M

# PARTsolutions

4.1



US Riemenbreite-15mm

4.2



US Riemenbreite-25mm

4.3



US Riemenbreite-9mm

5



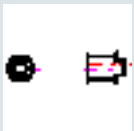
US Lager-HTD-Zahnscheiben-Zahnprofil-AT-5

5.1



US Riemenbreite-10mm

5.2



US Riemenbreite-16mm

5.3



US Riemenbreite-25mm

6



US Lager-Zahnscheiben-Zahnprofil-AT10

6.1



US Riemenbreite-16mm

6.2



US Riemenbreite-25mm

6.3



US Riemenbreite-32mm

6.4



US Riemenbreite-50mm

7



US Lager-Zahnscheiben-Zahnprofil-T10

7.1



US Riemenbreite-16mm

# PARTsolutions

7.2



US Riemenbreite-25mm

7.3



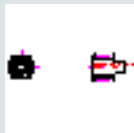
US Riemenbreite-32mm

7.4



US Riemenbreite-50mm

8



US Lager-Zahnscheiben-Zahnprofil-T2.5-5

8.1



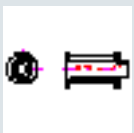
US Riemenbreite-10mm-T5

8.2



US Riemenbreite-16mm-T5

8.3



US Riemenbreite-25mm-T5

# PARTsolutions

8.4



US Riemenbreite-6mm-T2.5

9



US endkoepfe-fuer-zahnriemen-foederer-wa-ua25t10\_antriebsseite

10



US endkoepfe-fuer-zahnriemen-foederer-wa-ua25t10\_spannseite



1



US Lager-HTD-PowerGrip-GT2-Zahnscheiben-Zahnprofil-14-M

1.1



US Riemenbreite-115mm

112-14m-115



US 112-14m-115

28-14m-115



US 28-14m-115

29-14m-115



US 29-14m-115

30-14m-115



US 30-14m-115

32-14m-115



US 32-14m-115

1



US Lager-HTD-PowerGrip-GT2-Zahnscheiben-Zahnprofil-14-M

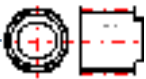
1.1



US Riemenbreite-115mm

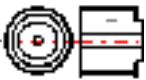
34-14m-115

US 34-14m-115



36-14m-115

US 36-14m-115



38-14m-115

US 38-14m-115



40-14m-115

US 40-14m-115



44-14m-115

US 44-14m-115



# PARTsolutions

1



US Lager-HTD-PowerGrip-GT2-Zahnscheiben-Zahnprofil-14-M

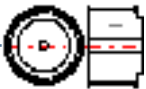
1.1



US Riemenbreite-115mm

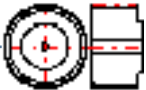
48-14m-115

US 48-14m-115



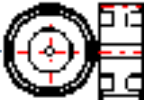
56-14m-115

US 56-14m-115



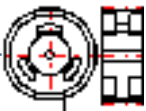
64-14m-115

US 64-14m-115



72-14m-115

US 72-14m-115



80-14m-115

US 80-14m-115



# PARTsolutions

1



US Lager-HTD-PowerGrip-GT2-Zahnscheiben-Zahnprofil-14-M

1.1



US Riemenbreite-115mm

90-14m-115



US 90-14m-115

1.2



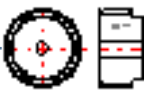
US Riemenbreite-40mm

112-14m-40



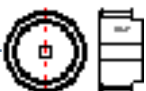
US 112-14m-40

28-14m-40



US 28-14m-40

29-14m-40



US 29-14m-40

1



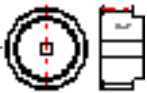
US Lager-HTD-PowerGrip-GT2-Zahnscheiben-Zahnprofil-14-M

1.2



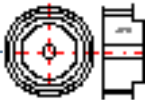
US Riemenbreite-40mm

30-14m-40



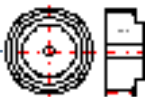
US 30-14m-40

32-14m-40



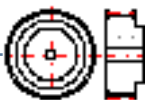
US 32-14m-40

34-14m-40



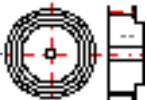
US 34-14m-40

36-14m-40



US 36-14m-40

38-14m-40



US 38-14m-40

1



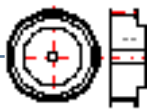
US Lager-HTD-PowerGrip-GT2-Zahnscheiben-Zahnprofil-14-M

1.2



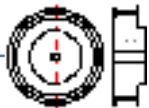
US Riemenbreite-40mm

40-14m-40



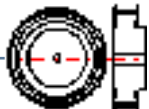
US 40-14m-40

44-14m-40



US 44-14m-40

48-14m-40



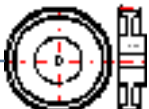
US 48-14m-40

56-14m-40



US 56-14m-40

64-14m-40



US 64-14m-40

# PARTsolutions

1



US Lager-HTD-PowerGrip-GT2-Zahnscheiben-Zahnprofil-14-M

1.2



US Riemenbreite-40mm

72-14m-40



US 72-14m-40

80-14m-40



US 80-14m-40

90-14m-40



US 90-14m-40

1.3



US Riemenbreite-55mm

112-14m-55



US 112-14m-55

# PARTsolutions

1



US Lager-HTD-PowerGrip-GT2-Zahnscheiben-Zahnprofil-14-M

1.3



US Riemenbreite-55mm

28-14m-55



US 28-14m-55

29-14m-55



US 29-14m-55

30-14m-55



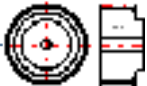
US 30-14m-55

32-14m-55



US 32-14m-55

34-14m-55



US 34-14m-55



1



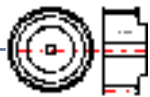
US Lager-HTD-PowerGrip-GT2-Zahnscheiben-Zahnprofil-14-M

1.3



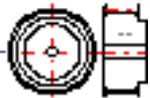
US Riemenbreite-55mm

36-14m-55



US 36-14m-55

38-14m-55



US 38-14m-55

40-14m-55



US 40-14m-55

44-14m-55



US 44-14m-55

48-14m-55



US 48-14m-55

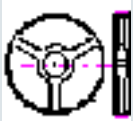
# PARTsolutions

1



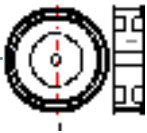
US Lager-HTD-PowerGrip-GT2-Zahnscheiben-Zahnprofil-14-M

1.3



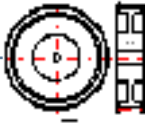
US Riemenbreite-55mm

56-14m-55



US 56-14m-55

64-14m-55



US 64-14m-55

72-14m-55



US 72-14m-55

80-14m-55



US 80-14m-55

90-14m-55



US 90-14m-55

# PARTsolutions

1



US Lager-HTD-PowerGrip-GT2-Zahnscheiben-Zahnprofil-14-M

1.4



US Riemenbreite-85mm

112-14m-85



US 112-14m-85

28-14m-85



US 28-14m-85

29-14m-85



US 29-14m-85

30-14m-85



US 30-14m-85

32-14m-85



US 32-14m-85

1



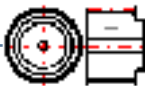
US Lager-HTD-PowerGrip-GT2-Zahnscheiben-Zahnprofil-14-M

1.4



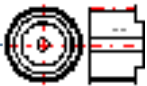
US Riemenbreite-85mm

34-14m-85



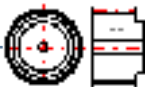
US 34-14m-85

36-14m-85



US 36-14m-85

38-14m-85



US 38-14m-85

40-14m-85



US 40-14m-85

44-14m-85



US 44-14m-85

# PARTsolutions

1



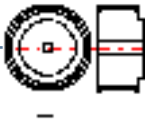
US Lager-HTD-PowerGrip-GT2-Zahnscheiben-Zahnprofil-14-M

1.4



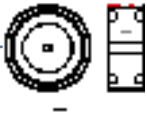
US Riemenbreite-85mm

48-14m-85



US 48-14m-85

56-14m-85



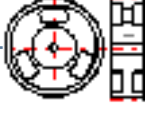
US 56-14m-85

64-14m-85



US 64-14m-85

72-14m-85



US 72-14m-85

80-14m-85



US 80-14m-85

# PARTsolutions

1



US Lager-HTD-PowerGrip-GT2-Zahnscheiben-Zahnprofil-14-M

1.4



US Riemenbreite-85mm

90-14m-85



US 90-14m-85

2



US Lager-HTD-PowerGrip-GT2-Zahnscheiben-Zahnprofil-8-M

2.1



US Riemenbreite-20mm

112-8m-20



US 112-8m-20

22-8m-20



US 22-8m-20

2



US Lager-HTD-PowerGrip-GT2-Zahnscheiben-Zahnprofil-8-M

2.1



US Riemenbreite-20mm

24-8m-20

US 24-8m-20



26-8m-20

US 26-8m-20



28-8m-20

US 28-8m-20



30-8m-20

US 30-8m-20



32-8m-20

US 32-8m-20



# PARTsolutions

2



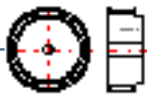
US Lager-HTD-PowerGrip-GT2-Zahnscheiben-Zahnprofil-8-M

2.1



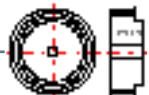
US Riemenbreite-20mm

34-8m-20



US 34-8m-20

36-8m-20



US 36-8m-20

38-8m-20



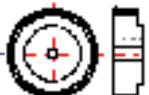
US 38-8m-20

40-8m-20



US 40-8m-20

44-8m-20



US 44-8m-20



# PARTsolutions

2



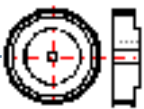
US Lager-HTD-PowerGrip-GT2-Zahnscheiben-Zahnprofil-8-M

2.1



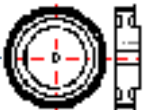
US Riemenbreite-20mm

48-8m-20



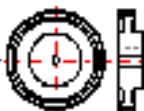
US 48-8m-20

56-8m-20



US 56-8m-20

64-8m-20



US 64-8m-20

72-8m-20



US 72-8m-20

80-8m-20



US 80-8m-20

# PARTsolutions

2



US Lager-HTD-PowerGrip-GT2-Zahnscheiben-Zahnprofil-8-M

2.1



US Riemenbreite-20mm

90-8m-20



US 90-8m-20

2.2



US Riemenbreite-30mm

112-8m-30



US 112-8m-30

22-8m-30



US 22-8m-30

24-8m-30



US 24-8m-30

2



US Lager-HTD-PowerGrip-GT2-Zahnscheiben-Zahnprofil-8-M

2.2



US Riemenbreite-30mm

26-8m-30

US 26-8m-30



28-8m-30

US 28-8m-30



30-8m-30

US 30-8m-30



32-8m-30

US 32-8m-30



34-8m-30

US 34-8m-30



2



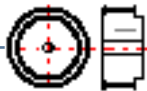
US Lager-HTD-PowerGrip-GT2-Zahnscheiben-Zahnprofil-8-M

2.2



US Riemenbreite-30mm

36-8m-30



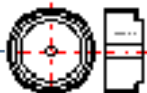
US 36-8m-30

38-8m-30



US 38-8m-30

40-8m-30



US 40-8m-30

44-8m-30



US 44-8m-30

48-8m-30



US 48-8m-30

# PARTsolutions

2



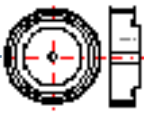
US Lager-HTD-PowerGrip-GT2-Zahnscheiben-Zahnprofil-8-M

2.2



US Riemenbreite-30mm

56-8m-30



US 56-8m-30

64-8m-30



US 64-8m-30

72-8m-30



US 72-8m-30

80-8m-30



US 80-8m-30

90-8m-30



US 90-8m-30

# PARTsolutions

2



US Lager-HTD-PowerGrip-GT2-Zahnscheiben-Zahnprofil-8-M

2.3



US Riemenbreite-50mm

112-8m-50



US 112-8m-50

22-8m-50



US 22-8m-50

24-8m-50



US 24-8m-50

26-8m-50



US 26-8m-50

28-8m-50



US 28-8m-50

# PARTsolutions

2



US Lager-HTD-PowerGrip-GT2-Zahnscheiben-Zahnprofil-8-M

2.3



US Riemenbreite-50mm

30-8m-50



US 30-8m-50

32-8m-50



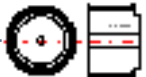
US 32-8m-50

34-8m-50



US 34-8m-50

36-8m-50



US 36-8m-50

38-8m-50



US 38-8m-50

# PARTsolutions

2



US Lager-HTD-PowerGrip-GT2-Zahnscheiben-Zahnprofil-8-M

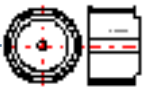
2.3



US Riemenbreite-50mm

40-8m-50

US 40-8m-50



44-8m-50

US 44-8m-50



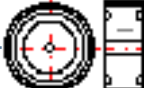
48-8m-50

US 48-8m-50



56-8m-50

US 56-8m-50



64-8m-50

US 64-8m-50





2



US Lager-HTD-PowerGrip-GT2-Zahnscheiben-Zahnprofil-8-M

2.3



US Riemenbreite-50mm

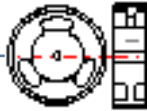
72-8m-50

US 72-8m-50



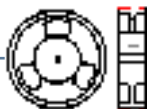
80-8m-50

US 80-8m-50



90-8m-50

US 90-8m-50



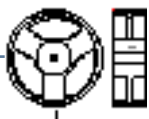
2.4



US Riemenbreite-85mm

112-8m-85

US 112-8m-85



2



US Lager-HTD-PowerGrip-GT2-Zahnscheiben-Zahnprofil-8-M

2.4



US Riemenbreite-85mm

22-8m-85

US 22-8m-85



24-8m-85

US 24-8m-85



26-8m-85

US 26-8m-85



28-8m-85

US 28-8m-85



30-8m-85

US 30-8m-85



2



US Lager-HTD-PowerGrip-GT2-Zahnscheiben-Zahnprofil-8-M

2.4



US Riemenbreite-85mm

32-8m-85

US 32-8m-85



34-8m-85

US 34-8m-85



36-8m-85

US 36-8m-85



38-8m-85

US 38-8m-85



40-8m-85

US 40-8m-85



# PARTsolutions

2



US Lager-HTD-PowerGrip-GT2-Zahnscheiben-Zahnprofil-8-M

2.4



US Riemenbreite-85mm

44-8m-85

US 44-8m-85



48-8m-85

US 48-8m-85



56-8m-85

US 56-8m-85



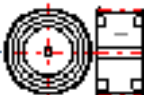
64-8m-85

US 64-8m-85



72-8m-85

US 72-8m-85



# PARTsolutions

2



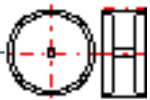
US Lager-HTD-PowerGrip-GT2-Zahnscheiben-Zahnprofil-8-M

2.4



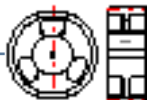
US Riemenbreite-85mm

80-8m-85



US 80-8m-85

90-8m-85



US 90-8m-85

3



US Lager-HTD-Zahnscheiben-Zahnprofil-3M

3.1



US Riemenbreite-15mm

16-3m--15



US 16-3m--15

# PARTsolutions

3



US Lager-HTD-Zahnscheiben-Zahnprofil-3M

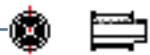
3.1



US Riemenbreite-15mm

18-3m--15

US 18-3m--15



20-3m--15

US 20-3m--15



21-3m--15

US 21-3m--15



22-3m--15

US 22-3m--15



24-3m-15

US 24-3m-15



# PARTsolutions

3



US Lager-HTD-Zahnscheiben-Zahnprofil-3M

3.1



US Riemenbreite-15mm

26-3m--15

US 26-3m--15



28-3m--15

US 28-3m--15



30-3m--15

US 30-3m--15



32-3m--15

US 32-3m--15



36-3m--15

US 36-3m--15



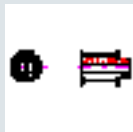
# PARTsolutions

3



US Lager-HTD-Zahnscheiben-Zahnprofil-3M

3.1



US Riemenbreite-15mm

40-3m--15

US 40-3m--15



44-3m--15

US 44-3m--15



48-3m--15

US 48-3m--15



60-3m--15

US 60-3m--15



72-3m--15

US 72-3m--15





# PARTsolutions

3



US Lager-HTD-Zahnscheiben-Zahnprofil-3M

3.2



US Riemenbreite-9mm

16-3m--09

US 16-3m--09



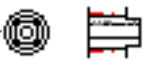
18-3m--09

US 18-3m--09



20-3m--09

US 20-3m--09



21-3m--09

US 21-3m--09



22-3m--09

US 22-3m--09



# PARTsolutions

3



US Lager-HTD-Zahnscheiben-Zahnprofil-3M

3.2



US Riemenbreite-9mm

24-3m--09

US 24-3m--09



26-3m--09

US 26-3m--09



28-3m--09

US 28-3m--09



30-3m--09

US 30-3m--09



32-3m--09

US 32-3m--09



# PARTsolutions

3



US Lager-HTD-Zahnscheiben-Zahnprofil-3M

3.2



US Riemenbreite-9mm

36-3m--09

US 36-3m--09



40-3m--09

US 40-3m--09



44-3m--09

US 44-3m--09



48-3m--09

US 48-3m--09



60-3m--09

US 60-3m--09



# PARTsolutions

3



US Lager-HTD-Zahnscheiben-Zahnprofil-3M

3.2



US Riemenbreite-9mm

72-3m--09



US 72-3m--09

4



US Lager-HTD-Zahnscheiben-Zahnprofil-5M

4.1



US Riemenbreite-15mm

12-5m-15



US 12-5m-15

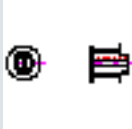
14-5m-15



US 14-5m-15

# PARTsolutions

4



US Lager-HTD-Zahnscheiben-Zahnprofil-5M

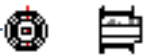
4.1



US Riemenbreite-15mm

15-5m-15

US 15-5m-15



16-5m-15

US 16-5m-15



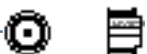
18-5m-15

US 18-5m-15



20-5m-15

US 20-5m-15



21-5m-15

US 21-5m-15



# PARTsolutions

4



US Lager-HTD-Zahnscheiben-Zahnprofil-5M

4.1



US Riemenbreite-15mm

22-5m-15

US 22-5m-15



24-5m-15

US 24-5m-15



26-5m-15

US 26-5m-15



28-5m-15

US 28-5m-15



30-5m-15

US 30-5m-15



# PARTsolutions

4



US Lager-HTD-Zahnscheiben-Zahnprofil-5M

4.1



US Riemenbreite-15mm

32-5m-15

US 32-5m-15



36-5m-15

US 36-5m-15



40-5m-15

US 40-5m-15



44-5m-15

US 44-5m-15



48-5m-15

US 48-5m-15



# PARTsolutions

4



US Lager-HTD-Zahnscheiben-Zahnprofil-5M

4.1



US Riemenbreite-15mm

60-5m-15



US 60-5m-15

72-5m-15



US 72-5m-15

4.2



US Riemenbreite-25mm

12-5m-25



US 12-5m-25

14-5m-25



US 14-5m-25



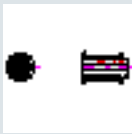
# PARTsolutions

4



US Lager-HTD-Zahnscheiben-Zahnprofil-5M

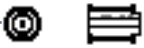
4.2



US Riemenbreite-25mm

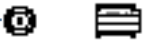
15-5m-25

US 15-5m-25



16-5m-25

US 16-5m-25



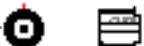
18-5m-25

US 18-5m-25



20-5m-25

US 20-5m-25



21-5m-25

US 21-5m-25



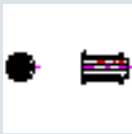
# PARTsolutions

4



US Lager-HTD-Zahnscheiben-Zahnprofil-5M

4.2



US Riemenbreite-25mm

22-5m-25

US 22-5m-25



24-5m-25

US 24-5m-25



26-5m-25

US 26-5m-25



28-5m-25

US 28-5m-25



30-5m-25

US 30-5m-25

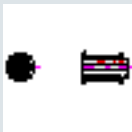


4



US Lager-HTD-Zahnscheiben-Zahnprofil-5M

4.2



US Riemenbreite-25mm

32-5m-25

US 32-5m-25



36-5m-25

US 36-5m-25



40-5m-25

US 40-5m-25



44-5m-25

US 44-5m-25



48-5m-25

US 48-5m-25



# PARTsolutions

4



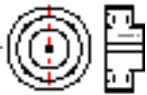
US Lager-HTD-Zahnscheiben-Zahnprofil-5M

4.2



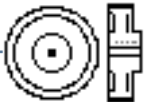
US Riemenbreite-25mm

60-5m-25



US 60-5m-25

72-5m-25



US 72-5m-25

4.3



US Riemenbreite-9mm

12-5m-09



US 12-5m-09

14-5m-09



US 14-5m-09

# PARTsolutions

4



US Lager-HTD-Zahnscheiben-Zahnprofil-5M

4.3



US Riemenbreite-9mm

15-5m-09

US 15-5m-09



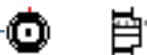
16-5m-09

US 16-5m-09



18-5m-09

US 18-5m-09



20-5m-09

US 20-5m-09



21-5m-09

US 21-5m-09



# PARTsolutions

4



US Lager-HTD-Zahnscheiben-Zahnprofil-5M

4.3



US Riemenbreite-9mm

22-5m-09

US 22-5m-09



24-5m-09

US 24-5m-09



26-5m-09

US 26-5m-09



28-5m-09

US 28-5m-09



30-5m-09

US 30-5m-09



4



US Lager-HTD-Zahnscheiben-Zahnprofil-5M

4.3



US Riemenbreite-9mm

32-5m-09

US 32-5m-09



36-5m-09

US 36-5m-09



40-5m-09

US 40-5m-09



44-5m-09

US 44-5m-09



48-5m-09

US 48-5m-09



# PARTsolutions

4



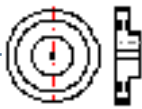
US Lager-HTD-Zahnscheiben-Zahnprofil-5M

4.3



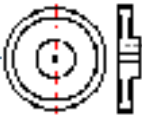
US Riemenbreite-9mm

60-5m-09



US 60-5m-09

72-5m-09



US 72-5m-09

5



US Lager-HTD-Zahnscheiben-Zahnprofil-AT-5

5.1



US Riemenbreite-10mm

21at5\_12-2



US 21at5\_12-2



5



US Lager-HTD-Zahnscheiben-Zahnprofil-AT-5

5.1



US Riemenbreite-10mm

21at5\_14-2

US 21at5\_14-2



21at5\_15-2

US 21at5\_15-2



21at5\_16-2

US 21at5\_16-2



21at5\_18-2

US 21at5\_18-2



21at5\_19-2

US 21at5\_19-2



# PARTsolutions

5



US Lager-HTD-Zahnscheiben-Zahnprofil-AT-5

5.1



US Riemenbreite-10mm

21at5\_20-2

US 21at5\_20-2



21at5\_22-2

US 21at5\_22-2



21at5\_24-2

US 21at5\_24-2



21at5\_25-2

US 21at5\_25-2



21at5\_26-2

US 21at5\_26-2



5



US Lager-HTD-Zahnscheiben-Zahnprofil-AT-5

5.1



US Riemenbreite-10mm

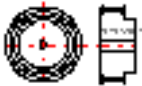
21at5\_27-2

US 21at5\_27-2



21at5\_28-2

US 21at5\_28-2



21at5\_30-2

US 21at5\_30-2



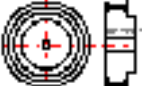
21at5\_32-2

US 21at5\_32-2



21at5\_36-2

US 21at5\_36-2



5



US Lager-HTD-Zahnscheiben-Zahnprofil-AT-5

5.1



US Riemenbreite-10mm

21at5\_40-2



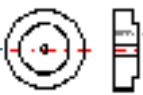
US 21at5\_40-2

21at5\_42-2



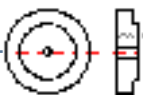
US 21at5\_42-2

21at5\_44-0



US 21at5\_44-0

21at5\_48-0



US 21at5\_48-0

21at5\_60-0



US 21at5\_60-0

# PARTsolutions

5



US Lager-HTD-Zahnscheiben-Zahnprofil-AT-5

5.2



US Riemenbreite-16mm

27at5\_12-2

US 27at5\_12-2



27at5\_14-2

US 27at5\_14-2



27at5\_15-2

US 27at5\_15-2



27at5\_16-2

US 27at5\_16-2



27at5\_18-2

US 27at5\_18-2



5



US Lager-HTD-Zahnscheiben-Zahnprofil-AT-5

5.2



US Riemenbreite-16mm

27at5\_19-2

US 27at5\_19-2



27at5\_20-2

US 27at5\_20-2



27at5\_22-2

US 27at5\_22-2



27at5\_24-2

US 27at5\_24-2



27at5\_25-2

US 27at5\_25-2



5



US Lager-HTD-Zahnscheiben-Zahnprofil-AT-5

5.2



US Riemenbreite-16mm

27at5\_26-2

US 27at5\_26-2



27at5\_27-2

US 27at5\_27-2



27at5\_28-2

US 27at5\_28-2



27at5\_30-2

US 27at5\_30-2



27at5\_32-2

US 27at5\_32-2



5



US Lager-HTD-Zahnscheiben-Zahnprofil-AT-5

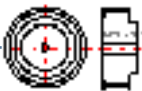
5.2



US Riemenbreite-16mm

27at5\_36-2

US 27at5\_36-2



27at5\_40-2

US 27at5\_40-2



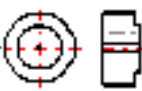
27at5\_42-2

US 27at5\_42-2



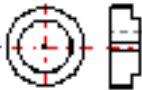
27at5\_44-0

US 27at5\_44-0



27at5\_48-0

US 27at5\_48-0





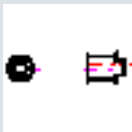
# PARTsolutions

5



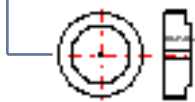
US Lager-HTD-Zahnscheiben-Zahnprofil-AT-5

5.2



US Riemenbreite-16mm

27at5\_60-0



US 27at5\_60-0

5.3



US Riemenbreite-25mm

36at5\_12-2



US 36at5\_12-2

36at5\_14-2



US 36at5\_14-2

36at5\_15-2



US 36at5\_15-2

# PARTsolutions

5



US Lager-HTD-Zahnscheiben-Zahnprofil-AT-5

5.3



US Riemenbreite-25mm

36at5\_16-2

US 36at5\_16-2



36at5\_18-2

US 36at5\_18-2



36at5\_19-2

US 36at5\_19-2



36at5\_20-2

US 36at5\_20-2



36at5\_22-2

US 36at5\_22-2

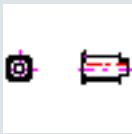


5



US Lager-HTD-Zahnscheiben-Zahnprofil-AT-5

5.3



US Riemenbreite-25mm

36at5\_24-2

US 36at5\_24-2



36at5\_25-2

US 36at5\_25-2



36at5\_26-2

US 36at5\_26-2



36at5\_27-2

US 36at5\_27-2



36at5\_28-2

US 36at5\_28-2



5



US Lager-HTD-Zahnscheiben-Zahnprofil-AT-5

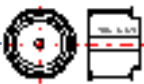
5.3



US Riemenbreite-25mm

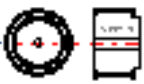
36at5\_30-2

US 36at5\_30-2



36at5\_32-2

US 36at5\_32-2



36at5\_36-2

US 36at5\_36-2



36at5\_40-2

US 36at5\_40-2



36at5\_42-2

US 36at5\_42-2



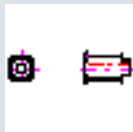
# PARTsolutions

5



US Lager-HTD-Zahnscheiben-Zahnprofil-AT-5

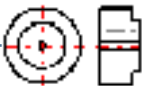
5.3



US Riemenbreite-25mm

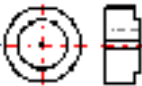
36at5\_44-2

US 36at5\_44-2



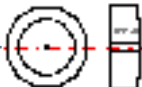
36at5\_48-0

US 36at5\_48-0



36at5\_60-0

US 36at5\_60-0



6



US Lager-Zahnscheiben-Zahnprofil-AT10

6.1



US Riemenbreite-16mm

31at10\_15-2



US 31at10\_15-2

31at10\_16-2



US 31at10\_16-2

31at10\_18-2



US 31at10\_18-2

31at10\_19-2



US 31at10\_19-2

31at10\_20-2



US 31at10\_20-2

6



US Lager-Zahnscheiben-Zahnprofil-AT10

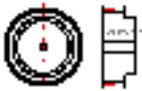
6.1



US Riemenbreite-16mm

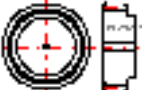
31at10\_22-2

US 31at10\_22-2



31at10\_24-2

US 31at10\_24-2



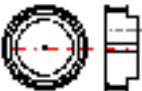
31at10\_25-2

US 31at10\_25-2



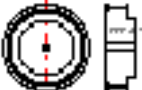
31at10\_26-2

US 31at10\_26-2



31at10\_27-2

US 31at10\_27-2



6



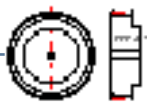
US Lager-Zahnscheiben-Zahnprofil-AT10

6.1



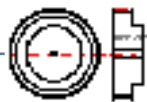
US Riemenbreite-16mm

31at10\_28-2



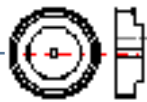
US 31at10\_28-2

31at10\_30-2



US 31at10\_30-2

31at10\_32-2



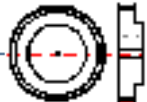
US 31at10\_32-2

31at10\_36-2



US 31at10\_36-2

31at10\_40-2



US 31at10\_40-2



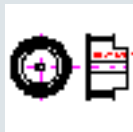
# PARTsolutions

6



US Lager-Zahnscheiben-Zahnprofil-AT10

6.1



US Riemenbreite-16mm

31at10\_44-0

US 31at10\_44-0

31at10\_48-0

US 31at10\_48-0

31at10\_60-0

US 31at10\_60-0

6.2



US Riemenbreite-25mm

40at10\_15-2

US 40at10\_15-2

6



US Lager-Zahnscheiben-Zahnprofil-AT10

6.2



US Riemenbreite-25mm

40at10\_16-2

US 40at10\_16-2



40at10\_18-2

US 40at10\_18-2



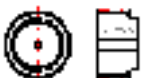
40at10\_19-2

US 40at10\_19-2



40at10\_20-2

US 40at10\_20-2



40at10\_22-2

US 40at10\_22-2



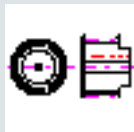
# PARTsolutions

6



US Lager-Zahnscheiben-Zahnprofil-AT10

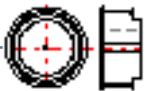
6.2



US Riemenbreite-25mm

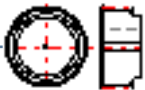
40at10\_24-2

US 40at10\_24-2



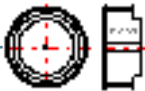
40at10\_25-2

US 40at10\_25-2



40at10\_26-2

US 40at10\_26-2



40at10\_27-2

US 40at10\_27-2



40at10\_28-2

US 40at10\_28-2



# PARTsolutions

6



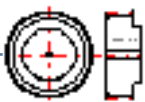
US Lager-Zahnscheiben-Zahnprofil-AT10

6.2



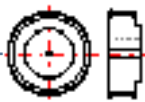
US Riemenbreite-25mm

40at10\_30-2



US 40at10\_30-2

40at10\_32-2



US 40at10\_32-2

40at10\_36-2



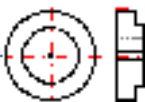
US 40at10\_36-2

40at10\_40-2



US 40at10\_40-2

40at10\_44-0



US 40at10\_44-0

6



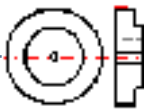
US Lager-Zahnscheiben-Zahnprofil-AT10

6.2



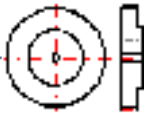
US Riemenbreite-25mm

40at10\_48-0



US 40at10\_48-0

40at10\_60-0



US 40at10\_60-0

6.3



US Riemenbreite-32mm

47at10\_18-2



US 47at10\_18-2

47at10\_19-2



US 47at10\_19-2

# PARTsolutions

6



US Lager-Zahnscheiben-Zahnprofil-AT10

6.3



US Riemenbreite-32mm

47at10\_20-2

US 47at10\_20-2



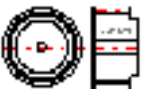
47at10\_22-2

US 47at10\_22-2



47at10\_24-2

US 47at10\_24-2



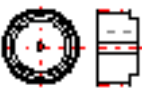
47at10\_25-2

US 47at10\_25-2



47at10\_26-2

US 47at10\_26-2



6



US Lager-Zahnscheiben-Zahnprofil-AT10

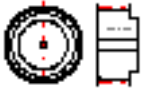
6.3



US Riemenbreite-32mm

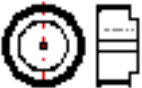
47at10\_27-2

US 47at10\_27-2



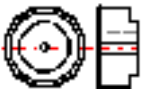
47at10\_28-2

US 47at10\_28-2



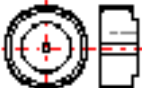
47at10\_30-2

US 47at10\_30-2



47at10\_32-2

US 47at10\_32-2



47at10\_36-2

US 47at10\_36-2



# PARTsolutions

6



US Lager-Zahnscheiben-Zahnprofil-AT10

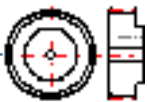
6.3



US Riemenbreite-32mm

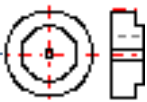
47at10\_40-2

US 47at10\_40-2



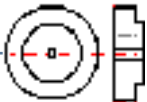
47at10\_44-0

US 47at10\_44-0



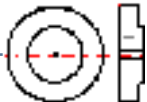
47at10\_48-0

US 47at10\_48-0



47at10\_60-0

US 47at10\_60-0





6



US Lager-Zahnscheiben-Zahnprofil-AT10

6.4



US Riemenbreite-50mm

66at10\_18-2

US 66at10\_18-2



66at10\_19-2

US 66at10\_19-2



66at10\_20-2

US 66at10\_20-2



66at10\_22-2

US 66at10\_22-2



66at10\_24-2

US 66at10\_24-2



6



US Lager-Zahnscheiben-Zahnprofil-AT10

6.4



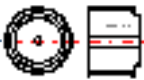
US Riemenbreite-50mm

66at10\_25-2



US 66at10\_25-2

66at10\_26-2



US 66at10\_26-2

66at10\_27-2



US 66at10\_27-2

66at10\_28-2



US 66at10\_28-2

66at10\_30-2



US 66at10\_30-2

6



US Lager-Zahnscheiben-Zahnprofil-AT10

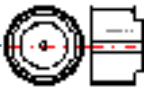
6.4



US Riemenbreite-50mm

66at10\_32-2

US 66at10\_32-2



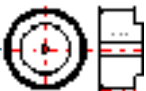
66at10\_36-2

US 66at10\_36-2



66at10\_40-2

US 66at10\_40-2



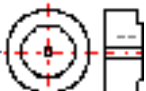
66at10\_44-0

US 66at10\_44-0



66at10\_48-0

US 66at10\_48-0



# PARTsolutions

6



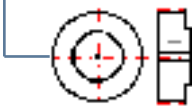
US Lager-Zahnscheiben-Zahnprofil-AT10

6.4



US Riemenbreite-50mm

66at10\_60-0



US 66at10\_60-0

7



US Lager-Zahnscheiben-Zahnprofil-T10

7.1



US Riemenbreite-16mm

31t10\_12-2



US 31t10\_12-2

31t10\_14-2



US 31t10\_14-2

7



US Lager-Zahnscheiben-Zahnprofil-T10

7.1



US Riemenbreite-16mm

31t10\_15-2

US 31t10\_15-2



31t10\_16-2

US 31t10\_16-2



31t10\_18-2

US 31t10\_18-2



31t10\_19-2

US 31t10\_19-2



31t10\_20-2

US 31t10\_20-2



7



US Lager-Zahnscheiben-Zahnprofil-T10

7.1



US Riemenbreite-16mm

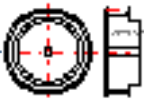
31t10\_24-2

US 31t10\_24-2



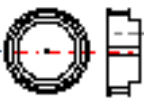
31t10\_25-2

US 31t10\_25-2



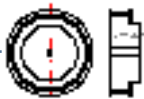
31t10\_26-2

US 31t10\_26-2



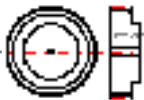
31t10\_27-2

US 31t10\_27-2



31t10\_30-2

US 31t10\_30-2



7



US Lager-Zahnscheiben-Zahnprofil-T10

7.1



US Riemenbreite-16mm

31110\_32-2



US 31110\_32-2

31110\_36-2



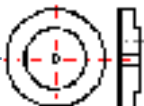
US 31110\_36-2

31110\_40-2



US 31110\_40-2

31110\_48-0



US 31110\_48-0

31110\_60-0



US 31110\_60-0

# PARTsolutions

7



US Lager-Zahnscheiben-Zahnprofil-T10

7.2



US Riemenbreite-25mm

40t10\_12-2

US 40t10\_12-2



40t10\_14-2

US 40t10\_14-2



40t10\_15-2

US 40t10\_15-2



40t10\_16-2

US 40t10\_16-2



40t10\_18-2

US 40t10\_18-2





7



US Lager-Zahnscheiben-Zahnprofil-T10

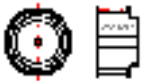
7.2



US Riemenbreite-25mm

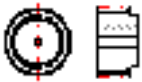
40t10\_19-2

US 40t10\_19-2



40t10\_20-2

US 40t10\_20-2



40t10\_24-2

US 40t10\_24-2



40t10\_25-2

US 40t10\_25-2



40t10\_26-2

US 40t10\_26-2



7



US Lager-Zahnscheiben-Zahnprofil-T10

7.2



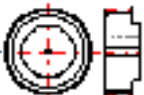
US Riemenbreite-25mm

40t10\_27-2



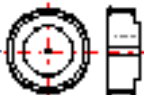
US 40t10\_27-2

40t10\_30-2



US 40t10\_30-2

40t10\_32-2



US 40t10\_32-2

40t10\_36-2



US 40t10\_36-2

40t10\_40-2



US 40t10\_40-2

# PARTsolutions

7



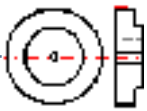
US Lager-Zahnscheiben-Zahnprofil-T10

7.2



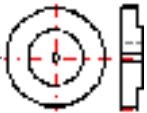
US Riemenbreite-25mm

40t10\_48-0



US 40t10\_48-0

40t10\_60-0



US 40t10\_60-0

7.3



US Riemenbreite-32mm

47t10\_18-2



US 47t10\_18-2

47t10\_19-2



US 47t10\_19-2

7



US Lager-Zahnscheiben-Zahnprofil-T10

7.3



US Riemenbreite-32mm

47t10\_20-2

US 47t10\_20-2



47t10\_24-2

US 47t10\_24-2



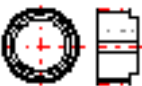
47t10\_25-2

US 47t10\_25-2



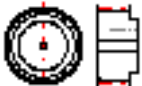
47t10\_26-2

US 47t10\_26-2



47t10\_27-2

US 47t10\_27-2



7



US Lager-Zahnscheiben-Zahnprofil-T10

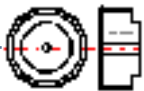
7.3



US Riemenbreite-32mm

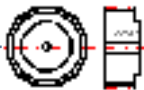
47t10\_30-2

US 47t10\_30-2



47t10\_32-2

US 47t10\_32-2



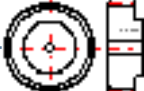
47t10\_36-2

US 47t10\_36-2



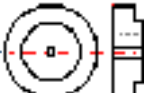
47t10\_40-2

US 47t10\_40-2



47t10\_48-0

US 47t10\_48-0



# PARTsolutions

7



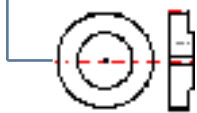
US Lager-Zahnscheiben-Zahnprofil-T10

7.3



US Riemenbreite-32mm

47t10\_60-0



US 47t10\_60-0

7.4



US Riemenbreite-50mm

66t10\_18-2



US 66t10\_18-2

66t10\_19-2



US 66t10\_19-2

66t10\_20-2



US 66t10\_20-2

7



US Lager-Zahnscheiben-Zahnprofil-T10

7.4



US Riemenbreite-50mm

66t10\_24-2

US 66t10\_24-2



66t10\_25-2

US 66t10\_25-2



66t10\_26-2

US 66t10\_26-2



66t10\_27-2

US 66t10\_27-2



66t10\_30-2

US 66t10\_30-2



7



US Lager-Zahnscheiben-Zahnprofil-T10

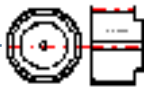
7.4



US Riemenbreite-50mm

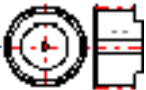
66t10\_32-2

US 66t10\_32-2



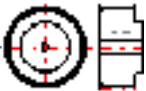
66t10\_36-2

US 66t10\_36-2



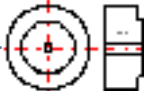
66t10\_40-2

US 66t10\_40-2



66t10\_48-0

US 66t10\_48-0



66t10\_60-0

US 66t10\_60-0





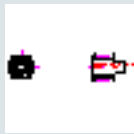
# PARTsolutions

8



US Lager-Zahnscheiben-Zahnprofil-T2.5-5

8.1



US Riemenbreite-10mm-T5

21t5\_10-2

US 21t5\_10-2



21t5\_12-2

US 21t5\_12-2



21t5\_14-2

US 21t5\_14-2



21t5\_15-2

US 21t5\_15-2



21t5\_16-2

US 21t5\_16-2



8



US Lager-Zahnscheiben-Zahnprofil-T2.5-5

8.1



US Riemenbreite-10mm-T5

2115\_18-2

US 2115\_18-2



2115\_19-2

US 2115\_19-2



2115\_20-2

US 2115\_20-2



2115\_24-2

US 2115\_24-2



2115\_25-2

US 2115\_25-2



8



US Lager-Zahnscheiben-Zahnprofil-T2.5-5

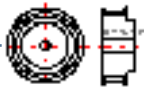
8.1



US Riemenbreite-10mm-T5

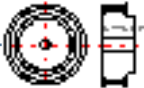
2115\_27-2

US 2115\_27-2



2115\_30-2

US 2115\_30-2



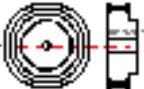
2115\_32-2

US 2115\_32-2



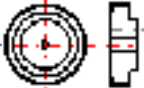
2115\_36-2

US 2115\_36-2



2115\_40-2

US 2115\_40-2



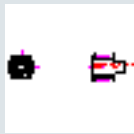
# PARTsolutions

8



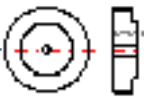
US Lager-Zahnscheiben-Zahnprofil-T2.5-5

8.1



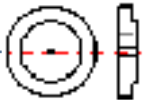
US Riemenbreite-10mm-T5

21t5\_48-0



US 21t5\_48-0

21t5\_60-0



US 21t5\_60-0

8.2



US Riemenbreite-16mm-T5

27t5\_10-2



US 27t5\_10-2

27t5\_12-2



US 27t5\_12-2

# PARTsolutions

8



US Lager-Zahnscheiben-Zahnprofil-T2.5-5

8.2



US Riemenbreite-16mm-T5

2715\_14-2

US 2715\_14-2



2715\_15-2

US 2715\_15-2



2715\_16-2

US 2715\_16-2



2715\_18-2

US 2715\_18-2



2715\_19-2

US 2715\_19-2



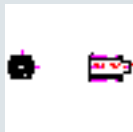
# PARTsolutions

8



US Lager-Zahnscheiben-Zahnprofil-T2.5-5

8.2



US Riemenbreite-16mm-T5

2715\_20-2

US 2715\_20-2



2715\_24-2

US 2715\_24-2



2715\_25-2

US 2715\_25-2



2715\_27-2

US 2715\_27-2



2715\_30-2

US 2715\_30-2



8



US Lager-Zahnscheiben-Zahnprofil-T2.5-5

8.2



US Riemenbreite-16mm-T5

2715\_32-2

US 2715\_32-2



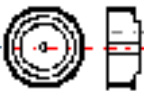
2715\_36-2

US 2715\_36-2



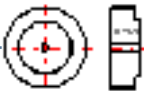
2715\_40-2

US 2715\_40-2



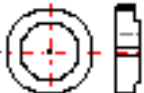
2715\_48-0

US 2715\_48-0



2715\_60-0

US 2715\_60-0



# PARTsolutions

8



US Lager-Zahnscheiben-Zahnprofil-T2.5-5

8.3



US Riemenbreite-25mm-T5

36t5\_10-2

US 36t5\_10-2



36t5\_12-2

US 36t5\_12-2



36t5\_14-2

US 36t5\_14-2



36t5\_15-2

US 36t5\_15-2



36t5\_16-2

US 36t5\_16-2





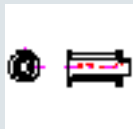
# PARTsolutions

8



US Lager-Zahnscheiben-Zahnprofil-T2.5-5

8.3



US Riemenbreite-25mm-T5

36t5\_18-2

US 36t5\_18-2



36t5\_19-2

US 36t5\_19-2



36t5\_20-2

US 36t5\_20-2



36t5\_24-2

US 36t5\_24-2



36t5\_25-2

US 36t5\_25-2



8



US Lager-Zahnscheiben-Zahnprofil-T2.5-5

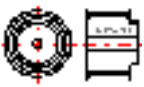
8.3



US Riemenbreite-25mm-T5

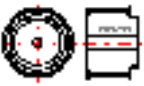
36t5\_27-2

US 36t5\_27-2



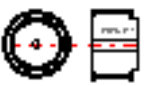
36t5\_30-2

US 36t5\_30-2



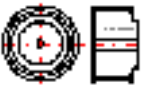
36t5\_32-2

US 36t5\_32-2



36t5\_36-2

US 36t5\_36-2



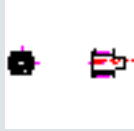
36t5\_40-2

US 36t5\_40-2



# PARTsolutions

8



US Lager-Zahnscheiben-Zahnprofil-T2.5-5

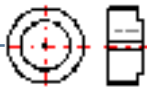
8.3



US Riemenbreite-25mm-T5

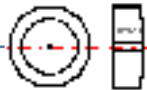
36t5\_48-0

US 36t5\_48-0



36t5\_60-0

US 36t5\_60-0



8.4



US Riemenbreite-6mm-T2.5

16t2.5\_12-2

US 16t2.5\_12-2



16t2.5\_14-2

US 16t2.5\_14-2



# PARTsolutions

8



US Lager-Zahnscheiben-Zahnprofil-T2.5-5

8.4



US Riemenbreite-6mm-T2.5

16t2.5\_15-2

US 16t2.5\_15-2



16t2.5\_18-2

US 16t2.5\_18-2



16t2.5\_19-2

US 16t2.5\_19-2



16t2.5\_20-2

US 16t2.5\_20-2



16t2.5\_24-2

US 16t2.5\_24-2



# PARTsolutions

8



US Lager-Zahnscheiben-Zahnprofil-T2.5-5

8.4



US Riemenbreite-6mm-T2.5

16t2.5\_25-2

US 16t2.5\_25-2



16t2.5\_30-2

US 16t2.5\_30-2



16t2.5\_32-2

US 16t2.5\_32-2



16t2.5\_36-2

US 16t2.5\_36-2



16t2.5\_40-2

US 16t2.5\_40-2



# PARTsolutions

8



US Lager-Zahnscheiben-Zahnprofil-T2.5-5

8.4



US Riemenbreite-6mm-T2.5

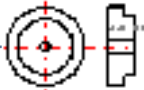
16t2.5\_48-0

US 16t2.5\_48-0



16t2.5\_60-0

US 16t2.5\_60-0



9



US endkoepfe-fuer-zahnriemen-foederer-wa-ua25t10\_antriebsseite

wa-ua25t10

US wa-ua25t10

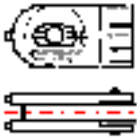


10



US endkoepe-fuer-zahnriemen-foederer-wa-ua25t10\_spannseite

wa-us25t10



US wa-us25t10

Copyright



Copyright

Content of the CAD catalog in PARTsolutions



Content of the CAD catalog in PARTsolutions