

PART SOLUTIONS

Actron Manufacturing



US Content of the CAD catalogue in PARTsolutions.
For more catalogues visit www.cadenas.de

D Inhalt des CAD-Kataloges in PARTsolutions.
Weitere Kataloge auf www.cadenas.de

F Contenu du catalogue CAO dans PARTsolutions.
Pour d'autres catalogues visitez www.cadenas.de

I Contenuto del catalogo nel PARTsolutions
altri cataloghi visitate www.cadenas.de

E Contenido del catálogo de CAD en PARTsolutions.
Para mas catálogos visite www.cadenas.de

INFORMATION

With PARTsolutions you are able to access a large range of standard and supplier parts as CAD system independent 2D and 3D geometry. Independent means the models are converted natively in practically every CAD system. When using CATIA for example, a real CATIA model will be generated from our model and can of course be edited and manipulated for downstream applications. Interfaces are available for all common CAD systems (see list below).



Integrations also exist to the most notable ERP/PDM systems (see list below).

Mit PARTsolutions steht Ihnen eine grosse Anzahl Normteile und Zukaufteile als CAD unabhängige 3D und 2D Geometrie zur Verfügung. Unabhängig heisst, sie können in jedes CAD System nativ übertragen werden. Der User von PARTsolutions erhält so in Verbindung mit z.B. CATIA ein echtes CATIA-Modell, das in seiner Konstruktion dann selbstverständlich weitermodelliert werden kann. Schnittstellen für jedes gängige CAD System sind verfügbar (siehe Liste unten).



In weiteren Ausbaustufen sind auch Anbindungen an ERP/PDM Systeme möglich (siehe Liste unten).

Avec PARTsolutions vous avez à votre disposition un grand nombre de composants normalisés et de pièces d'achat comme géométrie CAO indépendante du 2D et 3D. Indépendant veut dire qu'ils peuvent être transmis nativement dans presque tous les systèmes CAO. Ainsi l'utilisateur de PARTsolutions obtient une liaison avec un vrai modèle CATIA, en prenant CATIA comme exemple, qui peut être naturellement continuellement modélisé dans sa construction. Des interfaces pour tous les systèmes CAO courants sont disponibles (voir la liste ci-dessous).



Dans d'autres degrés d'extension, des liaisons avec des systèmes ERP/PDM sont aussi possibles (voir la liste ci-dessous).

Con PARTsolutions è possibile accedere a una grande quantità di parti standard e commerciali sotto forma di geometria 2D e 3D indipendente dal sistema CAD. Ciò significa che i modelli vengono convertiti nel formato nativo di praticamente tutti i sistemi CAD in commercio. Usando per esempio CATIA, viene generato un vero modello CATIA che può essere modificato e manipolato per successivi utilizzi. Le interfacce CAD disponibili sono elencate qui sotto.



Esistono anche integrazioni coi principali sistemi ERP/PDM (vedere la lista qui sotto).

Con PARTsolutions tiene a su disposición un gran número de estándares y normas de la industria como un sistema CAD de geometría independiente 2D y 3D. Independiente significa que se pueden transmitir de forma nativa a prácticamente entodos los sistemas CAD. El usuario de PARTsolutions posee de este modo en el usopor ejemplo de CATIA un modelo original de CATIA, en el cual por supuesto se puede seguir modelando. Interfaces para cada sistema CAD disponible son disponibles (ver lista abajo).



También son posibles integraciones para sistemas ERP/PDM (ver lista abajo)

PARTsolutions «Éξλά'©'όΆζÍP'ØÁμÄCAD¶Í-°ÍËýÍ-Í"ÓÄ¼p¼"x"ÓÄ¼μÄËý¼YÔÔ'©ζÍ»\$É'ÓÄí£
ÖäÄÍP'ØÁμÄÒäË¼ÉÇ£-ÒäÐ©Ëý¼YζÉÔÔÚ¼,°öËúÓÐ²»Í-CAD¶Í³ÉÍÖ±½ÓË'ÓÄí£PARTsolutions
μÄÓÄ»\$±ËËÇÉ;μÄÖ»,öÖëCATIAíà'ØμÄCATIAÄ£ÐÍ£-ÄÄ£ÐÍζÉÔÔÚ,ù¼Y²»Í-¼ßláÐèÒ±»¼ìÐØÐP,Äí£
²çÇÖ,Ä¼ÓζÚ¶ÓÄζ,öCAD¶Í³¼ÉÇζÉÓÄμÄ (¼ßláÇè²ζ¼ÄÄæμÄ±í,ñ)í£
ÄíáÖëERP/PDM¶Í³μÄ¼ÓζÚÓÚÐÄμÄ°æ±¼ÖÐËÇíéÈ«ÖÐζÉÄÜËμÍÖμÄ (¼ßláÇè²ζ¼ÄÄæμÄ±í,ñ)í£



Native CAD formats:

ADEM, AllPlan, AutoCad, Bihler CAT, Cadceus, Caddy, CADISON, Cadkey, Cadra, Catia, CCD/ProfCADAM, Cimatron, Fides, Helix, HiCAD, Ideas, Inventor, Logocad Triga, Mastercam, Materialise, Mechanical Desktop, Medusa, MegaCAD, Microstation, One Space Designer, Parasolid, ProE, SolidDesigner, SolidEdge, SolidWorks, Swiss Precision, Thinkdesign, TopSolid, Unigraphics, Varimetrix, Visi Series.

Neutral CAD formats:

SAT, STEP, IGES, DXF.

ERP/PDM Systeme:

SAP, Teamcenter, smarteam, Windchill, Insight, Compass, Gain, ProCad, Eigner. Weitere Schnittstellen auf Anfrage.

1



US Latches

1.1



US Paddle

1.1.1



US Rectangular, Flush Mounted, Narrow Paddle

1.1.2



US Oval, Flush Mounted, Narrow Paddle

1.2



US Sliding

1.2.1



US Flush Mounted

1.2.2



US Flush Mounted, Extended Pull Handle

1.2.3



US Flush Mounted, Extended Pull Handle, Semi-Oval

1.2.4



US Flush Mounted, Square, Extended Pull Handle

1.2.5



US Oval, Flush Mounted, Extended Pull Handle

1.2.6



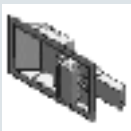
US Oval, Flush Mounted, Flush Pull Handle, Extended Pull Handle

1.2.7



US Rectangular, Extended Pull Handle

1.2.8



US Rectangular, Flush Mounted

1.2.9



US Rectangular, Flush Mounted, Extended Pull Handle

1.2.10



US Rectangular, Flush Mounted, Flush Pull Handle

1.2.11



US Rectangular, Flush Mounted, Flush Pull Handle, Extended Pull Handle

1.2.12



US Rectangular, Surface Mounted

1.2.13



US Surface Mounted

1.3



US Push Button

1.3.1



US Round, Flush Button

1.4



US Cockpit Door

1.4.1



US Basic

1.5



US Multi-Point Door Bolting System

1.5.1



US Oval, Flush Mounted, Wide Paddle, 1-2 Point Latching

1.5.2



US Rectangular, Flush Mounted, Narrow Paddle, 1-2 Point Latching

1.5.3



US Round, Flush Mounted, D - Pull Handle, 1_2 Point Latching

1.5.4



US Round, Flush Mounted, D - Pull Handle, 1-3 Point Latching

2



US Retainers

2.1



US Quarter Turns

2.1.1



US Rectangular, Single

2.1.2



US Tapered, Single

2.2



US Door Retainers

2.2.1



US Rectangular

3



US Slides

3.1



US Aluminum Extension Slides

PARTsolutions

3.1.1



US Full Ball Bearing

3.1.2



US Solid Bearing

3.2



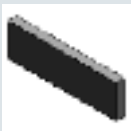
US Misc. Slide Hardware

3.2.1



US Basic

3.2.2



US Nut bar

4



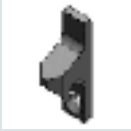
US Mounting Hardware

4.1



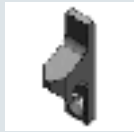
US Strikes

4.1.1



US Standard Duty / Hook Bolt

4.1.1.1



US Jamb Edge Protector

4.1.2



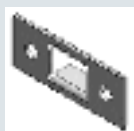
US Standard Duty / Rectangular Bolt

4.1.2.1



US Adjustable Mounting

4.1.2.2



US Basic

4.1.2.3



US Jamb Edge Protector

4.1.2.4



US Stop / Dampener

4.1.2.5



US Trimnable Flat Lip

4.1.3



US Standard Duty / Round Bolt

4.1.3.1



US Trimnable Flat Lip

4.1.4



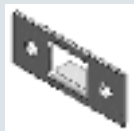
US Standard Duty / Single Bolt

4.1.4.1



US Adjustable Mounting

4.1.4.2



US Basic

4.1.4.3



US Jamb Edge Protector

4.1.4.4



US Stop / Dampener

4.1.4.5



US Trimmable Flat Lip

4.1.5



US Heavy Duty / Double Bolt

4.1.5.1



US Jamb Edge Protector

4.1.6



US Heavy Duty / Rectangular Bolt

4.1.6.1



US Jamb Edge Protector

4.1.7



US Heavy Duty / Single Bolt

4.1.7.1



US Jamb Edge Protector

4.2



US Escutcheons / Trims

4.2.1



US Oval

4.2.2



US Round

4.2.3



US Square

4.3



US Brackets / Back Plates

4.3.1



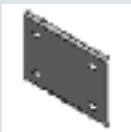
US Mounts Door Bolting Systems

4.3.2



US Mounts Door Retainers

4.3.3



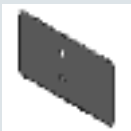
US Mounts Hook Latches

4.3.4



US Mounts Oval Latches

4.3.5



US Mounts Rectangle Paddle Latches

4.3.6



US Mounts Rectangle Sliding Latches

4.3.7



US Basic

4.4



US Fastener

PARTsolutions

4.4.1



US Hex Drive / Reverse Mount

5



US Hangers

5.1



US Coat Hooks

5.2



US Hat Hooks

5.3



US Coat Racks

6



US Pulls, Handles and Knobs

6.1



US Cup Pulls

PARTsolutions

6.1.1



US Oval / Flush Mounted

6.1.2



US Rectangular / Flush Mounted

6.1.3



US Round / Flush Mounted

6.2



US Handles and Knobs

6.2.1



US Round

6.2.2



US Oval

6.2.3



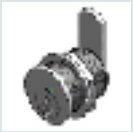
US Rectangular / Flush Mounted

7



US Miscellaneous

7.1



US Lock Cylinders

7.1.1



US Basic

7.2



US Hinges

7.3



US Latch - Hinges

7.3.1



US Surface Mounted - Quick release hinge

7.4



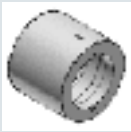
US Door / Drawer Openers

7.5



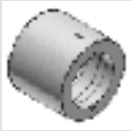
US Extractors

7.6



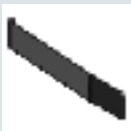
US Couplings

7.6.1



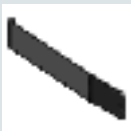
US Basic

7.7



US Drawer Stops

7.7.1



US Basic

7.8

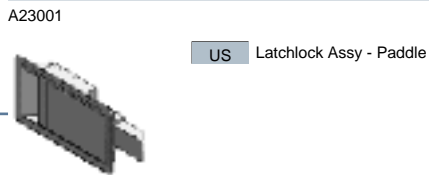
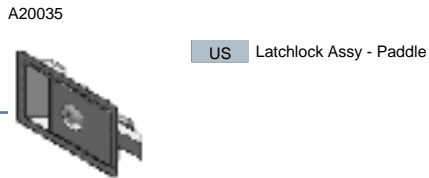
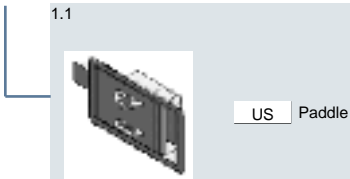
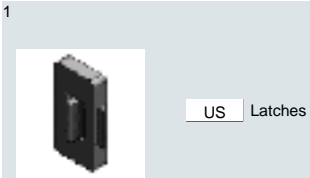


US Catches

7.8.1



US Basic / Magnetic type



PARTsolutions

1.1



US Paddle

1.1.1



US Rectangular, Flush Mounted, Narrow Paddle

A23514



US Latch Assy - Paddle

1.1.2



US Oval, Flush Mounted, Narrow Paddle

A23334



US Latch Assy - Paddle

PARTsolutions

1



US Latches

1.2



US Sliding

1.2.1



US Flush Mounted

A2075



US Latch Assy - Sliding, Flush Mounted

1.2.2



US Flush Mounted, Extended Pull Handle

A30004



US Latch Assy - Slide Knob

PARTsolutions

1



US Latches

1.2



US Sliding

1.2.3



US Flush Mounted, Extended Pull Handle, Semi-Oval

A27386



US Latch Assy - Sliding

1.2.4



US Flush Mounted, Square, Extended Pull Handle

A27387



US Latch Assy - Square Double Sided (trunk door)

1



US Latches

1.2



US Sliding

1.2.5



US Oval, Flush Mounted, Extended Pull Handle

A27350

US Latch Assy - Sliding



A27360

US Latch Assy - Sliding



A27380

US Latch Assy - Sliding



A27395

US Latch Assy - Sliding



PARTsolutions

1



US Latches

1.2



US Sliding

1.2.6



US Oval, Flush Mounted, Flush Pull Handle, Extended Pull Handle

A27355



US Latch Assy - Sliding

1.2.7



US Rectangular, Extended Pull Handle

A2001



US Latch Assy - Sliding

PARTsolutions

1



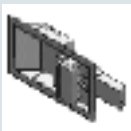
US Latches

1.2



US Sliding

1.2.8



US Rectangular, Flush Mounted

A20001



US Latch Assy - Sliding

A20096



US Latch Assy - Sliding

A20125



US Latch Assy - Sliding Silenced

A2125



US Latch Assy - Sliding

PARTsolutions

1.2



US Sliding

1.2.8



US Rectangular, Flush Mounted

A23096



US Latchlock Assy - Sliding

1.2.9



US Rectangular, Flush Mounted, Extended Pull Handle

A27022



US Latch Assy - Sliding

A27034



US Latch Assy - Sliding

A27048



US Latch Assy - Sliding

PARTsolutions

1



US Latches

1.2



US Sliding

1.2.10



US Rectangular, Flush Mounted, Flush Pull Handle

A27074



US Latch Assy - Sliding

1.2.11



US Rectangular, Flush Mounted, Flush Pull Handle, Extended Pull Handle

A27102



US Latch Assy - Sliding

A27302



US Latch Assy - Sliding

PARTsolutions

1



US Latches

1.2



US Sliding

1.2.12



US Rectangular, Surface Mounted

A2124



US Latch Assy - Sliding w/Stud

1.2.13



US Surface Mounted

A20025



US Latch Assy - Sliding

A20033



US Latch Assy - Sliding

1.2



US Sliding

1.2.13



US Surface Mounted

A20076



US Latch Assy - Sliding

A20077



US Latch Assy - Sliding

A20095



US Latch Assy - Sliding

A20126



US Latch Assy - Sliding

A30027



US Latch Assy - Sliding, Remote Actuated

PARTsolutions

1.2



US Sliding

1.2.13



US Surface Mounted

A30034



US Latch Assy - Sliding, Remote Actuated

A30067



US Latch Assy - Sliding, Remote Actuated

1.3



US Push Button

1.3.1



US Round, Flush Button

A30007



US Latch Assy - Push Button

PARTsolutions

1



US Latches

1.4



US Cockpit Door

1.4.1



US Basic

A41038



US Latch assembly

1.5



US Multi-Point Door Bolting System

1.5.1



US Oval, Flush Mounted, Wide Paddle, 1-2 Point Latching

A39219



US Door Bolting System - Paddle

1



US Latches

1.5



US Multi-Point Door Bolting System

1.5.2



US Rectangular, Flush Mounted, Narrow Paddle, 1-2 Point Latching

A39049



US Door Bolting System - Paddle

1.5.3



US Round, Flush Mounted, D - Pull Handle, 1_2 Point Latching

A39103



US Door Bolting System - D-Handle

1



US Latches

1.5



US Multi-Point Door Bolting System

1.5.4



US Round, Flush Mounted, D - Pull Handle, 1-3 Point Latching

A39105



US Door Bolting System - D-Handle

PARTsolutions

2



US Retainers

2.1



US Quarter Turns

2.1.1



US Rectangular, Single

A35510



US 1/4 Turn Retainer

2.1.2



US Tapered, Single

A35502



US 1/4 Turn Retainer

A35521



US 1/4 Turn Retainer

2



US Retainers

2.2



US Door Retainers

2.2.1



US Rectangular

A35012

US Latch Assy - Retainer



A35012S-1+A43004

US Latch Assy - Retainer



A35013

US 1/4 Turn Retainer



3



US Slides

3.1



US Aluminum Extension Slides

3.1.1



US Full Ball Bearing

A5110

US Slide Assy - Aluminum (.31" x 1.62")



A5210

US Slide Assy - Aluminum (.38" x 1.58")



A5510

US Slide Assy - Aluminum (.50" x 2.00")



A5520

US Slide Assy - Aluminum (.50" x 2.00")



3.1



US Aluminum Extension Slides

3.1.1



US Full Ball Bearing

A5810



US Slide Assy - Aluminum (.62" x 3.00")

A6212



US Slide Assy - Aluminum (1.00" x 3.50")

3.1.2



US Solid Bearing

A5125



US Slide Assy - Aluminum (.31" x 1.62")

3



US Slides

3.2



US Misc. Slide Hardware

3.2.1



US Basic

A53100



US Mounting Bracket (front) - Slide

A53101



US Mounting Bracket (rear) - Slide

ACR53002



US Cable Carrier - Steel

PARTsolutions

3



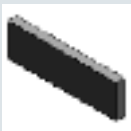
US Slides

3.2



US Misc. Slide Hardware

3.2.2



US Nut bar

A53200



US Mounting Hardware - Nut Bars

4



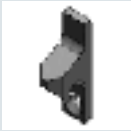
US Mounting Hardware

4.1



US Strikes

4.1.1



US Standard Duty / Hook Bolt

4.1.1.1



US Jamb Edge Protector

A32056



US Strike - Hook

PARTsolutions

4



US Mounting Hardware

4.1



US Strikes

4.1.2



US Standard Duty / Rectangular Bolt

4.1.2.1



US Adjustable Mounting

A32019



US Strike

A32050



US Strike Assy - Adjustable w/Stop

A32060



US Strike Assy - Adjustable

PARTsolutions

4.1



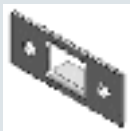
US Strikes

4.1.2



US Standard Duty / Rectangular Bolt

4.1.2.2



US Basic

A32064



US Strike

4.1.2.3



US Jamb Edge Protector

A32014



US Strike

A32024



US Strike

4.1.2



US Standard Duty / Rectangular Bolt

4.1.2.3



US Jamb Edge Protector

A32033



US Strike

A32046



US Strike

A32060



US Strike Assy - Adjustable

A32061



US Strike

A32062



US Strike

PARTsolutions

4.1



US Strikes

4.1.2



US Standard Duty / Rectangular Bolt

4.1.2.4



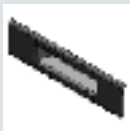
US Stop / Dampener

A32050



US Strike Assy - Adjustable w/Stop

4.1.2.5



US Trimmable Flat Lip

A32019



US Strike

A32050



US Strike Assy - Adjustable w/Stop

PARTsolutions

4.1.2



US Standard Duty / Rectangular Bolt

4.1.2.5



US Trimmable Flat Lip

A32054



US Strike

A32061



US Strike

4.1.3



US Standard Duty / Round Bolt

4.1.3.1



US Trimmable Flat Lip

A32047



US Strike

PARTsolutions

4



US Mounting Hardware

4.1



US Strikes

4.1.4



US Standard Duty / Single Bolt

4.1.4.1



US Adjustable Mounting

A32019



US Strike

A32050



US Strike Assy - Adjustable w/Stop

A32060



US Strike Assy - Adjustable

PARTsolutions

4.1



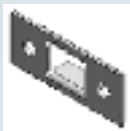
US Strikes

4.1.4



US Standard Duty / Single Bolt

4.1.4.2



US Basic

A32064



US Strike

4.1.4.3



US Jamb Edge Protector

A32014



US Strike

A32024



US Strike

4.1.4



US Standard Duty / Single Bolt

4.1.4.3



US Jamb Edge Protector

A32033



US Strike

A32046



US Strike

A32056



US Strike - Hook

A32060



US Strike Assy - Adjustable

PARTsolutions

4.1



US Strikes

4.1.4



US Standard Duty / Single Bolt

4.1.4.4



US Stop / Dampener

A32050



US Strike Assy - Adjustable w/Stop

4.1.4.5



US Trimmable Flat Lip

A32019



US Strike

A32047



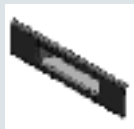
US Strike

4.1.4



US Standard Duty / Single Bolt

4.1.4.5



US Trimmable Flat Lip

A32050



US Strike Assy - Adjustable w/Stop

A32054



US Strike

4.1.5



US Heavy Duty / Double Bolt

4.1.5.1



US Jamb Edge Protector

A32033



US Strike

4



US Mounting Hardware

4.1



US Strikes

4.1.6



US Heavy Duty / Rectangular Bolt

4.1.6.1



US Jamb Edge Protector

A32033



US Strike

4



US Mounting Hardware

4.1



US Strikes

4.1.7



US Heavy Duty / Single Bolt

4.1.7.1



US Jamb Edge Protector

A32033



US Strike

4



US Mounting Hardware

4.2



US Escutcheons / Trims

4.2.1



US Oval

A43022



US Sleeve - Trim

A43034



US Escutcheon

A43035



US Escutcheon

4



US Mounting Hardware

4.2



US Escutcheons / Trims

4.2.2



US Round

A2110



US Trim Ring - Lock Cylinder

A43003



US Escutcheon

A43007



US Escutcheon

A43008



US Escutcheon

PARTsolutions

4.2



US Escutcheons / Trims

4.2.2



US Round

A43009



US Sleeve - Trim

A43011



US Sleeve - Trim

A43025



US Sleeve - Trim

A43036



US Sleeve - Trim

PARTsolutions

4



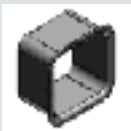
US Mounting Hardware

4.2



US Escutcheons / Trims

4.2.3



US Square

A43020



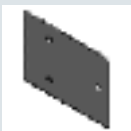
US Sleeve - Trim

4.3



US Brackets / Back Plates

4.3.1



US Mounts Door Bolting Systems

A43015



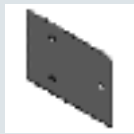
US Mounting Plate - Latch

4.3



US Brackets / Back Plates

4.3.1



US Mounts Door Bolting Systems

A43018



US Mounting Plate - Latch

A43033



US Shim - Latch

4.3.2



US Mounts Door Retainers

A43004



US Mounting Plate Assy - Retainer

4



US Mounting Hardware

4.3



US Brackets / Back Plates

4.3.3



US Mounts Hook Latches

A43023



US Mounting Bracket - Latch

4.3.4



US Mounts Oval Latches

A44004



US Mounting Plate - Latch

A44005



US Mounting Plate - Latch

PARTsolutions

4.3



US Brackets / Back Plates

4.3.4



US Mounts Oval Latches

A44006



US Mounting Plate - Latch

4.3.5



US Mounts Rectangle Paddle Latches

A43005



US Mounting Plate - Latch

A43006



US Mounting Plate - Latch

A43012



US Mounting Plate - Latch

4.3



US Brackets / Back Plates

4.3.5



US Mounts Rectangle Paddle Latches

A43014



US Mounting Plate - Latch

A43015



US Mounting Plate - Latch

A43019



US Mounting Bracket - Latch

A43024



US Mounting Bracket - Latch

A43027



US Mounting Bracket - Latch

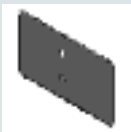
PARTsolutions

4.3



US Brackets / Back Plates

4.3.5



US Mounts Rectangle Paddle Latches

A43033



US Shim - Latch

4.3.6



US Mounts Rectangle Sliding Latches

A43010



US Mounting Plate - Latch

A43033



US Shim - Latch

4



US Mounting Hardware

4.3



US Brackets / Back Plates

4.3.7



US Basic

A43026



US Spacer - Push / Pull Latch

4.4



US Fastener

4.4.1



US Hex Drive / Reverse Mount

A53300



US Fastener - Button Head

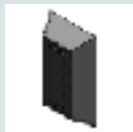
PARTsolutions

5



US Hangers

5.1



US Coat Hooks

A2025



US Coat Hook Assy

A2026



US Coat Hook Assy

A2030



US Coat Hook Assy

A2031



US Coat Hook Assy

A2033



US Coat Hook Assy

PARTsolutions

5



US Hangers

5.1



US Coat Hooks

A2034



US Coat Hook Assy

A2036



US Coat Hook Assy

A2089



US Coat Hook Assy

5.2



US Hat Hooks

A2083



US Hat Hook Assy

5



US Hangers

5.2



US Hat Hooks

A2039



US Hat Hook Assy

5.3



US Coat Racks

A2035



US Coat rack assembly, extending, ball bearing

PARTsolutions

6



US Pulls, Handles and Knobs

6.1



US Cup Pulls

6.1.1



US Oval / Flush Mounted

A45025



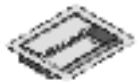
US Cup Pull - Handle

6.1.2



US Rectangular / Flush Mounted

A20068



US Pull Handle Assy

A45003



US Cup Pull

PARTsolutions

6.1



US Cup Pulls

6.1.2



US Rectangular / Flush Mounted

A45004



US Cup Pull

A45006



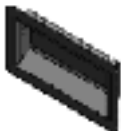
US Cup Pull

A45009



US Cup Pull - Handle

A45010



US Cup Pull - Handle

A45012



US Cup Pull - Handle

PARTsolutions

6.1



US Cup Pulls

6.1.2



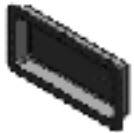
US Rectangular / Flush Mounted

A45013



US Cup Pull

A45015



US Cup Pull

A45016



US Cup Pull - Handle

A45017



US Cup Pull

A45018



US Cup Pull

6.1



US Cup Pulls

6.1.2



US Rectangular / Flush Mounted

A45023



US Cup Pull - Handle

6.1.3



US Round / Flush Mounted

A45002



US Cup Pull - Finger

PARTsolutions

6



US Pulls, Handles and Knobs

6.2



US Handles and Knobs

6.2.1



US Round

A2130



US Knob Assy w/Stud (Round)

A2131



US Knob Assy w/Stud (Round)

A2133



US Knob Assy w/Stud (Round)

PARTsolutions

6



US Pulls, Handles and Knobs

6.2



US Handles and Knobs

6.2.2



US Oval

A2132



US Knob Assy w/Stud (Oval)

A2134



US Knob Assy w/Stud (Oval)

A2135



US Knob Assy w/Stud (Oval)

PARTsolutions

6



US Pulls, Handles and Knobs

6.2



US Handles and Knobs

6.2.3



US Rectangular / Flash Mounted

A44001



US Handle Assy

A44007



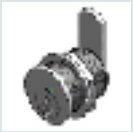
US Handle Assy

7



US Miscellaneous

7.1



US Lock Cylinders

7.1.1



US Basic

A2077



US Lock Cylinder Assembly

7.2



US Hinges

A2069



US Hinge Assy

7



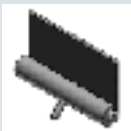
US Miscellaneous

7.3



US Latch - Hinges

7.3.1



US Surface Mounted - Quick release hinge

A20004



US Latch - Hinge Assy

7.4



US Door / Drawer Openers

A32022



US Door Opening Device

A32025



US Door Opening Device

PARTsolutions

7



US Miscellaneous

7.4



US Door / Drawer Openers

A32041



US Door Opening Device

A32044



US Door Opening Device

A32051



US Door Opening Device

A32069



US Door Opening Device

7



US Miscellaneous

7.5



US Extractors

A52503



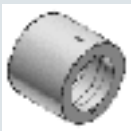
US Extractor - Aluminum

7.6



US Couplings

7.6.1



US Basic

A20066



US Nut coupling

7



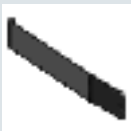
US Miscellaneous

7.7



US Drawer Stops

7.7.1



US Basic

A32016



US Drawer Stop

7.8



US Catches

7.8.1



US Basic / Magnetic type

A20063



US Keeper Assy

PARTsolutions

Copyright



Copyright

Content of the CAD catalog in PARTsolutions



Content of the CAD catalog in PARTsolutions