

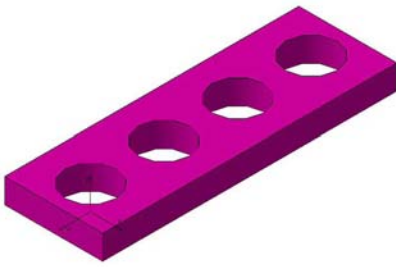
# ABB MC

SH  
CALE  
SHIM

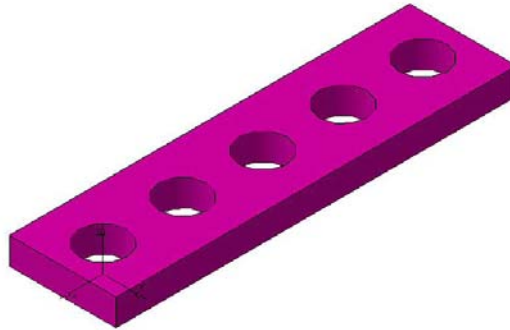
CNOMO  
DIN  
NAAMS

# SH Cale Shim

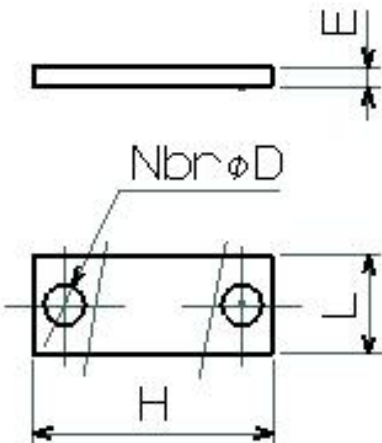
CNOMO – DIN – NAAMS



W 050 012 672



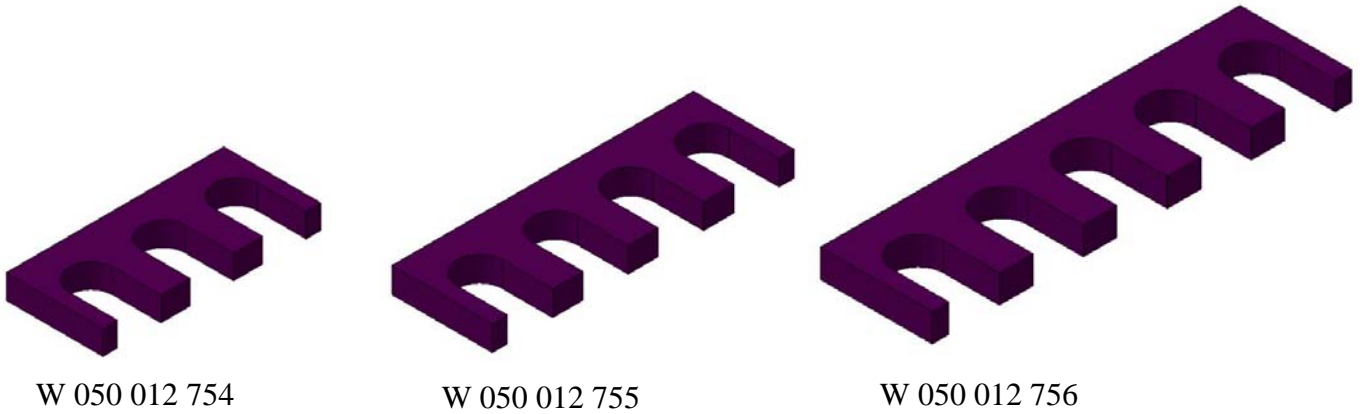
W 050 012 702



SH : Shim - Cale				
N° Standard	E = mm	HxL	Nbr D	W = Kg
W 050 012 672	5	60x20	4 D10,5	
W 050 012 702	5	75x20	5 D9	

# SH Cale Shim

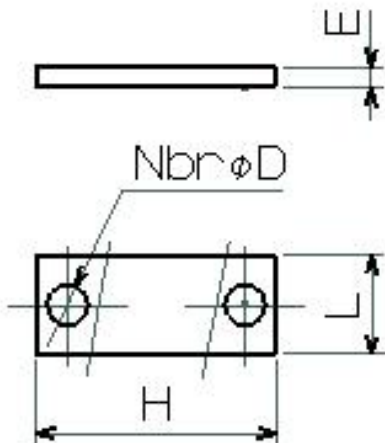
CNOMO – DIN – NAAMS



W 050 012 754

W 050 012 755

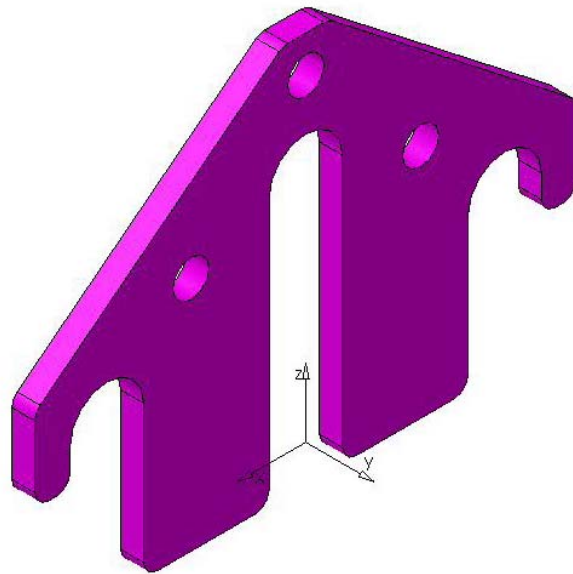
W 050 012 756



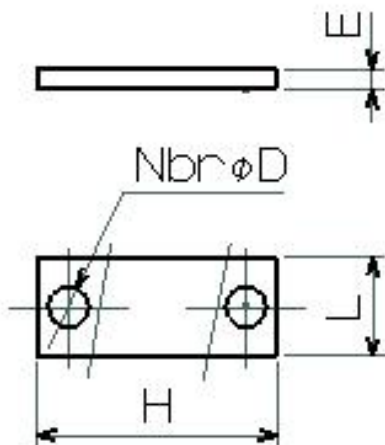
SH : Shim - Cale				
N° Standard	E = mm	HxL	Nbr D	W = Kg
W 050 012 754	5	45x20	3 D9	
W 050 012 755	5	60x20	4 D9	
W 050 012 756	5	75x20	5 D9	

# SH Cale Shim

CNOMO – DIN – NAAMS

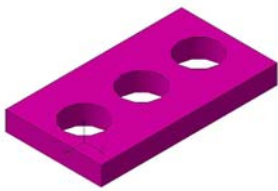


W 050 012 687



SH : Shim - Cale				
N° Standard	E = mm	HxL	Nbr D	W = Kg
W 050 012 687	5	118x85	3 D16	

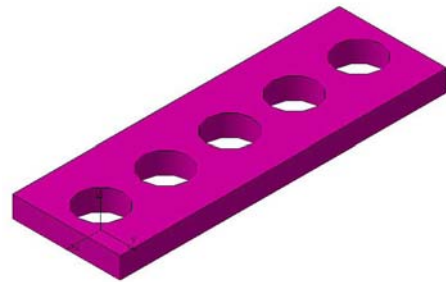
# SH Cale Shim NAAMS



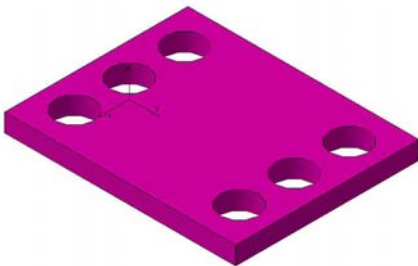
ASP350



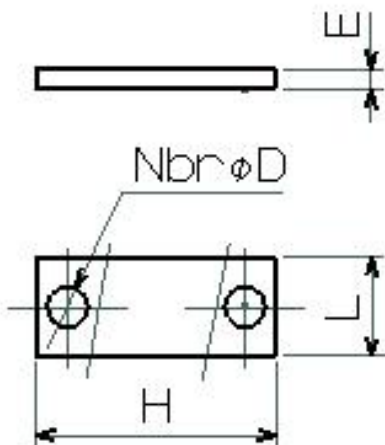
ASP450  
ASP450N



ASP550



ASP650



SH : Shim - Cale				
Code NAAMS	E = mm	HxL	Nbr D	W = Kg
ASP350	5	46x25	3 D10,5	
ASP450	5	61x25	4 D10,5	
ASP450N	5	61x20	4 D10,5	
ASP550	5	76x25	5 D10,5	
ASP650	5	63x50	6 D10,5	

# SH

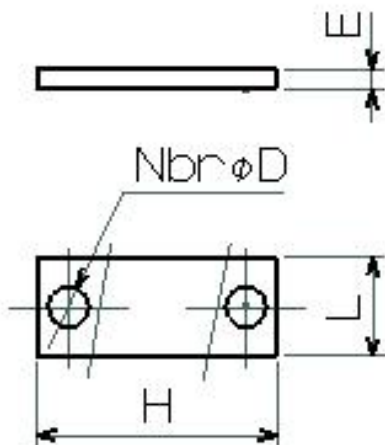
## Cale

## Shim

NAAMS



ASP450S



SH : Shim - Cale				
Code NAAMS	E = mm	HxL	Nbr D	W = Kg
ASP450S	5	44x20	1 D10,5	