

PART SOLUTIONS

Kisslig



11/2005

US Content of the CAD catalog in PARTsolutions.
For more catalogues visit www.cadenas.de


D Inhalt des CAD-Kataloges in PARTsolutions.
Weitere Kataloge auf www.cadenas.de

F Contenu du catalogue CAO dans PARTsolutions.
Pour d'autres catalogues visitez www.cadenas.de

I Contenuto del catalogo nel PARTsolutions
altri cataloghi visitate www.cadenas.de


E Contenido del catálogo de CAD en PARTsolutions.
Para mas catálogos visite www.cadenas.de

INFORMATION




With PARTsolutions you are able to access a large range of standard and supplier parts as CAD system independent 2D and 3D geometry. Independent means the models are converted natively in practically every CAD system. When using CATIA for example, a real CATIA model will be generated from our model and can of course be edited and manipulated for downstream applications. Interfaces are available for all common CAD systems (see list below).

Integrations also exist to the most notable ERP/PDM systems (see list below).




Mit PARTsolutions steht Ihnen eine grosse Anzahl Normteile und Zukaufteile als CAD unabhängige 3D und 2D Geometrie zur Verfügung. Unabhängig heisst, sie können in jedes CAD System nativ übertragen werden. Der User von PARTsolutions erhält so in Verbindung mit z.B. CATIA ein echtes CATIA-Modell, das in seiner Konstruktion dann selbstverständlich weitermodelliert werden kann. Schnittstellen für jedes gängige CAD System sind verfügbar (siehe Liste unten).

In weiteren Ausbaustufen sind auch Anbindungen an ERP/PDM Systeme möglich (siehe Liste unten).




Avec PARTsolutions vous avez à votre disposition un grand nombre de composants normalisés et de pièces d'achat comme géométrie CAO indépendante du 2D et 3D. Indépendant veut dire qu'ils peuvent être transmis nativement dans presque tous les systèmes CAO. Ainsi l'utilisateur de PARTsolutions obtient une liaison avec un vrai modèle CATIA, en prenant CATIA comme exemple, qui peut être naturellement continuellement modélisé dans sa construction. Des interfaces pour tous les systèmes CAO courants sont disponibles (voir la liste ci-dessous).

Dans d'autres degrés d'extension, des liaisons avec des systèmes ERP/PDM sont aussi possibles (voir la liste ci-dessous).



Con PARTsolutions è possibile accedere a una grande quantità di parti standard e commerciali sotto forma di geometria 2D e 3D indipendente dal sistema CAD. Ciò significa che i modelli vengono convertiti nel formato nativo di praticamente tutti i sistemi CAD in commercio. Usando per esempio CATIA, viene generato un vero modello CATIA che può essere modificato e manipolato per successivi utilizzi. Le interfacce CAD disponibili sono elencate qui sotto.

Esistono anche integrazioni coi principali sistemi ERP/PDM (vedere la lista qui sotto).



Con PARTsolutions tiene a su disposición un gran número de estándares y normas de la industria como un sistema CAD de geometría independiente 2D y 3D. Independiente significa que se pueden transmitir de forma nativa a prácticamente en todos los sistemas CAD. El usuario de PARTsolutions posee de este modo en el uso por ejemplo de CATIA un modelo original de CATIA, en el cual por supuesto se puede seguir modelando. Interfaces para cada sistema CAD disponible son disponibles (ver lista abajo).

También son posibles integraciones para sistemas ERP/PDM (ver lista abajo)

Native CAD formats:

ADEM, AllPlan, AutoCad, Bihler CAT, Cadceus, Caddy, CADISON, Cadkey, Cadra, Catia, CCD/ProfCADAM, Cimatron, Fides, Helix, HiCAD, Ideas, Inventor, Logocad Triga, Mastercam, Materialise, Mechanical Desktop, Medusa, MegaCAD, Microstation, One Space Designer, Parasolid, ProE, SolidDesigner, SolidEdge, SolidWorks, Swiss Precision, Thinkdesign, TopSolid, Unigraphics, Varimetrix, Visi Series.

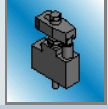
Neutral CAD formats:

SAT, STEP, IGES, DXF.

ERP/PDM Systeme:

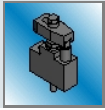
SAP, Teamcenter, smarteam, Windchill, Insight, Compass, Gain, ProCad, Eigner. Weitere Schnittstellen auf Anfrage.

1



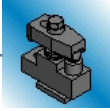
k_system_5000

1



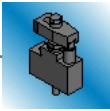
k_system_5000

5000_00...



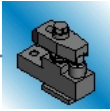
Spannelemente mono

5000_05...



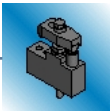
Spannelemente mono fix

5000_01...



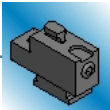
Spannelemente mono,lang

5000_06...



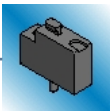
Spannelemente mono fix,lang

5000_10...



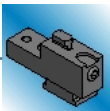
Grundelemente modular

5000_15...



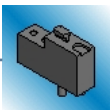
Grundelemente modular fix

5000_11...



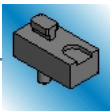
Grundelemente modular,lang

5000_16...



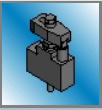
Grundelemente modular fix,lang

5000_17...



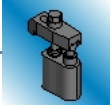
Basiselemente

1



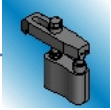
k_system_5000

5000_20...



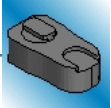
Spanneinheiten

5000_25...



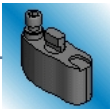
Spanneinheiten verlaengert

5000_30...



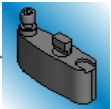
Hoehenbloecke

5000_35...



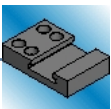
Zwischenauflagen

5000_36...



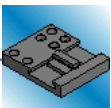
Zwischenauflagen

5000_40...



Basisplatten

5000_42...



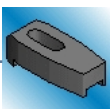
Basisplatten mit T-Nutenstein drehbar

5000_44...



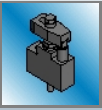
Rundspann-Sets

5000_45...



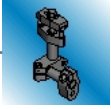
Pratzen verschiebbar mit Ansatz oder Gewindebohrung

1



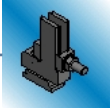
k_system_5000

5000_51...



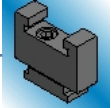
Halteelemente

5000_70...



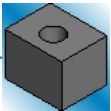
Anschlaege verstellbar

5000_75...



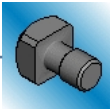
Hoehenbloেকে

5000_80...



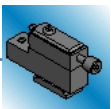
Weiche Auflagen

5000_85...



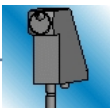
Spannsitzen

5000_90...



Seitenspanner

5000_93...



Seitenspanner-Gegenhalter

5000_95...



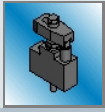
Spannsitzen fuer Seitenspanner

5000_96...



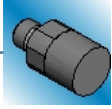
Tiefspanbacken

1



k_system_5000

5000_98...



Weiche Auflagen,rund

Content



US Content of the CAD catalogue in PARTsolutions

D Inhalt des CAD-Kataloges in PARTsolutions

F Contenu du catalogue CAO dans PARTsolutions

I Contenuto del catalogo nel PARTsolutions

E Contenido del catálogo de CAD en PARTsolutions

Copyright



Copyright